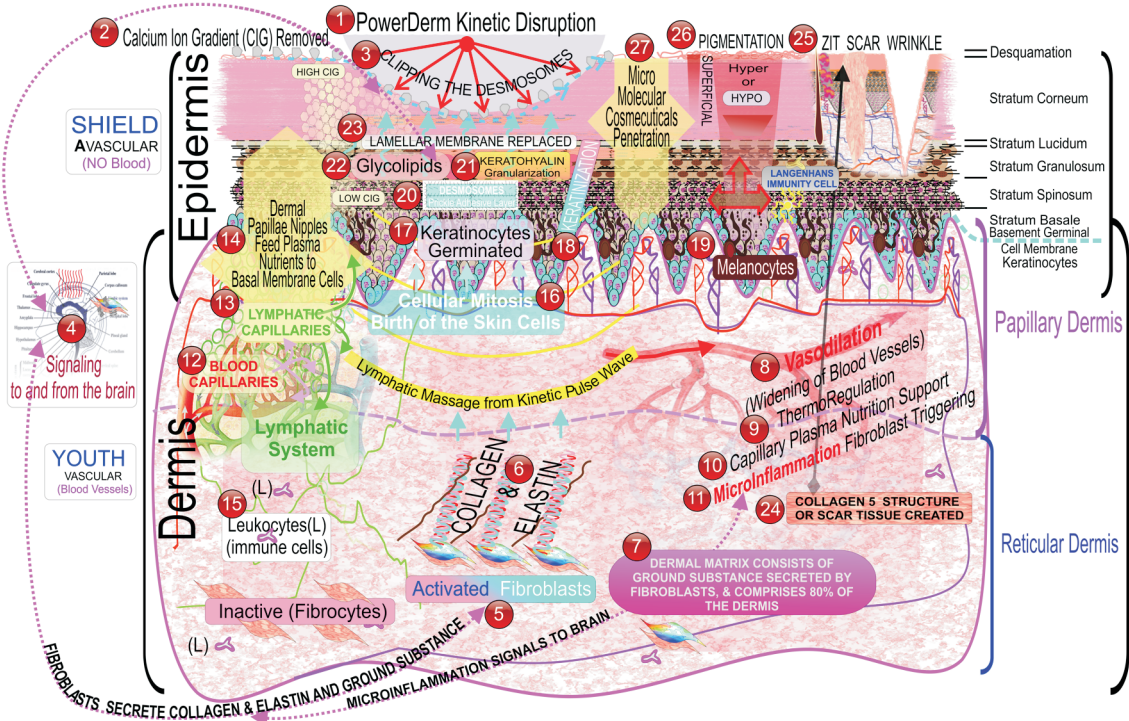


# POWERDERM KINETIC DERMABRASION

## Epidermal & Dermal Responses



### 13 Lymphatic System Responses

- Hyper-Circulation of Blood & Lymphatic Systems**
28. Creates Blood Vessel Vasodilation
  29. Stimulates Blood Circulation throughout Dermis
  30. Stimulates Blood Capillary Plasma Release into Interstitial Fluids
- Removal of Interstitial Trash & Pathogens**
31. Removes Toxic Cellular Debris
  32. Removes Metabolic Cellular Waste and Toxins
  33. Removes Dead Skin Cells in the Interstitial Spaces
  34. Removes Stagnant Dermal Interstitial Fluids
  35. Removes Viral & Bacterial Pathogens
  36. Dissolves Unbound Proteins (cellular debris)
  37. Dissolves Dermal Acneic Scars-Collagen 5
  38. Circulates Lymphocytes (T-Cells) in Blood & Lymphatic Vessels
  39. Transports Antigen Clearing Langenhans Cells to Lymph Nodes
- Balances Hormonal Distribution**
40. Distributes Anti-Aging DHEA to improve Collagen, Tone, Wrinkles
  41. Distributes Progesterone
  42. Distributes Estrogen
  43. Distributes Testosterone and Aids Collagen retention in Aged Skin
  44. Distributes Peptide Hormone Prolactin
- Increases & Equalizes Blood Plasma Vitamin Nutrients to Dermis & Epidermis**
45. Blood Plasma Vitamins
  46. Blood Plasma Antioxidants
  47. Blood Plasma Amino Acids
  48. Blood Plasma Natural Peptides
  49. Blood Plasma Nutrients into Epidermis through the Basal Membrane
  50. Supports Optimal Cellular Mitosis Replication
  51. Restores Health & Vitality to Skin

### 7 Dermal Matrix Responses

- Initiates Collagenic Matrix Rebuilding**
52. Massage Friction creates Microinflammation
  53. Microinflammation triggers Fibroblast Secretions
  54. Fibroblasts Secretion Increases Collagen Peptides
  55. Fibroblasts Secretions Increases Elastin Peptides
  56. Fibroblasts Secretion Increases Dermal Matrix Ground Substance
  57. Fibroblasts Secretion Increases Hyaluronic Acid
- Improves Skin Appearance and Functioning**
58. Distributes Body's Own Natural Hyaluronic Acid to Epi/Dermis
  59. Flushes Melanin from Epidermis—Remediating Hyperpigmentation
  60. Balances Melanocyte Health to Reverse Hypo-pigmentation
  61. Distributes Oxygen for Healthy Cell Function
  62. Distributes Optimized Nutritional Support of Collagen & Elastin Synthesis
  63. Distributes Optimized Nutritional Support of Cellular Amino Acid Proteins & Peptides
  64. Distributes Optimized Nutritional Support of Hormones
  65. Replaces Entire Epidermal Cellular Matrix with Nutrition Supported Healthy Cells
- Proliferates Immune System Cells**
66. Increases White Blood Cells (WBC) Migration
  67. Distributes WBC (Leukocytes) in the Epi/Dermis
  68. Leukocytes transform into Langenhans Pathogen Removal Cells in Epidermis
  69. Langenhans cells engulf Pathogens, then Reverse Migrate to Lymphatic system
  70. Langenhans Cells assist the Proliferation of T-cells and B-cells immune response.
  71. Lymphocyte T-cell & B-cell replication triggered by WBC and Langenhans Cells
  72. Lymphocytes spread to blood but especially numerous in the Lymph Nodes

- Ground Substance**
73. Dermal Ground Substance is secreted by Fibroblasts
  74. Fibroblasts secrete Tropocollagen which solidifies to collagen fibers
  75. Increases Glycoprotein
  76. Increases Reticulin fibers
  77. Increases Elastin fibers
  78. Increases Glycosaminoglycans
  79. Increases Glycoproteins
  80. Increases Amino acid proteins
  81. Increases Proteoglycans
  82. Increases Hyaluronic Acid,
  83. Increases Collagen
  84. Increases Elastin
  85. Increases Fibronectin
  86. Increases Laminin
- Collagen & Elastin**
87. Increased C & E Peptides stabilize the Ground Substance
  88. Increased Collagen and Elastin improves Structural Integrity